

River Valley Clean-Up

Sunday, May 3rd, 2009 from 11:00 am - 2:00 pm
Come out & keep our neighbourhood clean.
*refreshments and snacks will be provided.

Medieval Summer BBQ

Sunday, June 28th, 2009 from 3:00-7:00pm
It will be MEDEIVAL MAYHEM out on the Cloverdale grounds with the Knights from Living Backwards around. Come one, come all, come dressed up as princes, princesses, kings, queens, knights and damsels. You never know what will be happening- duels & knightly demos. Fun & games with Volleyball & Bocce Ball.
-please bring a dessert, as a meal will be provided
-\$5/family CCL member \$15/family non-CCL member.



Seniors' Friday Fitness Class & Thursday Evening

Fitness Class If you are interested in a fitness class designed for seniors or a general fitness class on Thursday evening fitness class call Contact Moon at 461-8381. Programs will run only if there is enough interest.



Cloverdale Book Club

Meets once a month on Mondays evenings. If you would like to join contact Fredda 780-465-6961.



Cloverdale Community League Membership

To purchase community league membership contact Janet Hardy 780-439-3149

**C
o
m
m
u
n
i
t
y

E
v
e
n
t
s**

BENNETT CENTRE

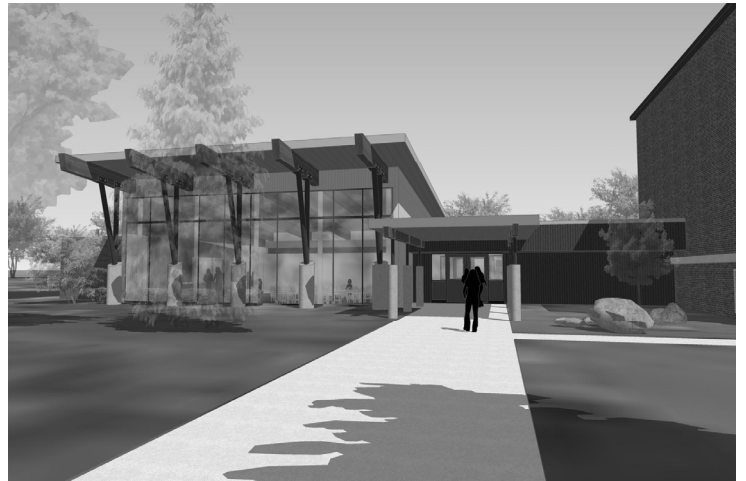
The staff from the main Bennett Centre building are back in the historic building and are able to offer some limited programming to students.

The Bennett Environmental Centre Annex replacement planning is progressing smoothly. The construction drawings and specifications are currently being prepared by the architect and are approximately 75 per cent complete. Also, the District is in the process of applying for a development permit.

The replacement Annex building has been redesigned with regard to sustainable construction. Of note, the new design features large front windows that will provide considerable natural light. A higher efficiency mechanical system will be installed and higher efficiency lighting fixtures will be used. Construction waste will be managed to divert material from landfills to recycling. In addition, the building will have access to up-to-date technology.

The goal is to have construction of the Annex completed and ready for occupancy by early 2010.

Jane Farrell, Supervisor
Communications
Edmonton Public Schools
Centre for Education
One Kingsway
Edmonton, AB T5H 4G9
Office: 780-429-8290
Cell: 780-970-4356
www.epsb.ca



Real Estate Update from Jeremiah

As a resident of Cloverdale, I receive many inquiries about the real estate happenings in the neighbourhood on a regular basis. I thought I would take this opportunity to start updating you in the newsletter as to what has been going on in our community.

Activity since January 1, 2009			
	Sales	Expired	Price Range
Condo	3	5	\$235 000 - \$340 000
House	1	4	\$636 000 - \$ 636 000

Current Listings		
For Sale	Total #	Price Range
Condo	13	\$269 000 - \$509 000
House	6	\$419 000 - \$975 000

If you have any questions, please feel free to contact me. I look forward to seeing you all out enjoying our great neighbourhood this spring!

Jeremiah Townsend

Realtor

780-995-9864

info@jeremiahtownsend.com

JeremiahTownsend.com

Cloverdale Community League Executive 2007/08

President..... Mary Cameron
 Vice President.....Murray Schneider
 Vice President.....Jeremiah Townsend
 Secretary.....Janet Hardy
 Treasurer.....Al Skoreyko
 Social Director.....Moon Trueman
 Social Director.....Dave Shylko
 Newsletter Editor.....Leslie Webb

Past President.....Jacqueline Petrie

Casino Coordinator....Marilyn Mucha
 Hall Manager.....Janet Hardy
 Bookkeeper.....Judy Tomazewski
 Folk Fest Liaison.....Dino Bottos
 CCL Hall.....465-0306